



LAXIT INDUSTRIES

Lighting your ways...

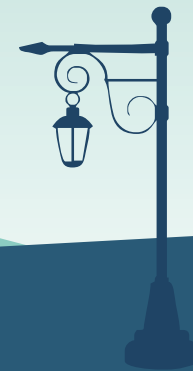
Octagonal & Conical Poles | High Mast
Decorative Poles & Luminaries

OUR SERVICES:

Street Lighting Poles | Highmast Lighting Poles | Decorative Poles | Arms & Accessories

ABOUT US:

Lighting plays a pivotal role in ensuring a smooth traffic flow, safety of residents & appearance of places (offices, gardens, parks, pathways, lanes etc.) Here at **Laxit Industries** we offer a broad array of styles, sizes & materials to create the ideal light pole for you and also ensure your safety & security and not just your safety & security, we understand your concepts and bring it to reality.



DIMENSION OF STANDARD POLYGONAL LIGHTNING POLE:

Sr. No.	Pole Height	Section Details			Top Dia.	Bottom Dia.	Sheet Thickness		Base Plate Details				Foundation Bolt Details		
		Nos. & Section	Sides	Length			MM	MM	PCO	Type	Dia	Length	No. of bolts		
														Mtrs.	Nos.
1	3	1	8	3000	70	130	3	200	200	12	200	J-TYPE	16	450	4
2	4	1	8	4000	70	130	3	200	200	12	200	J-TYPE	16	450	4
3	5	1	8	5000	70	130	3	220	220	12	220	J-TYPE	16	600	4
4	6	1	8	6000	70	130	3	220	220	12	220	J-TYPE	20	600	4
5	7	1	8	7000	70	135	3	225	225	16	220	J-TYPE	20	700	4
6	8	1	8	8000	70	135	3	225	225	16	220	J-TYPE	20	700	4
7	9	1	8	9000	70	155	3	260	260	16	260	J-TYPE	24	750	4
8	10	1	8	10000	70	175	3	275	275	16	275	J-TYPE	24	750	4
9	10	1	8	10000	90	200	3	290	290	16	290	J-TYPE	24	750	4
10	11	1	8	11000	90	210	3	320	320	20	320	J-TYPE	24	750	4
11	11	1	8	12000	90	230	3	325	325	20	325	J-TYPE	24	750	4

DIMENSION OF CONICAL POLE:

Sr. No.	Height (mm)	Thickness (mm)	Top A/F	Bottom A/F	Bass Plate	Pcd	Foundation Bolt	Door Length (opening)
1	6000	3	70	142	240 x 240 x 16	240	M 20 x 700	350
2	7000	3	70	154	240 x 240 x 16	240	M 20 x 700	400
3	8000	3	75	171	275 x 275 x 16	275	M 24 x 750	400
4	9000	3	75	183	275 x 275 x 16	275	M 24 x 750	500
5	10000	3	75	196	300 x 300 x 16	300	M 24 x 750	500
6	9000	3	90	198	300 x 300 x 16	300	M 24 x 750	500
7	10000	3	90	201	300 x 300 x 16	300	M 24 x 750	500
8	11000	3	90	222	300 x 300 x 20	320	M 24 x 750	500
9	12000	3	90	234	340 x 340 x 25	340	M 24 x 750	500
10	9000	3	100	208	300 x 300 x 16	300	M 24 x 750	500
11	10000	3	100	220	320 x 320 x 20	320	M 24 x 750	500
12	11000	3	100	232	340 x 340 x 25	340	M 24 x 750	500
13	12000	3	100	244	340 x 340 x 25	340	M 24 x 750	500

DIMENSION OF STANDARD POLYGONAL LIGHTNING MAST:

Sr. No.	Pole Height	Section Details			Top Dia.	Bottom Dia.	Sheet Thickness			Base Plate Details			Foundation Bolt Details			
		Nos. & Section	Sides	Length			MM	MM	MM	MM	Diameter	Thickness	PCO	Dia	Length	No. of bolts
1	30	3	20	10600	150	610	4	5	6	840	32	740	33	1200	16	
2	30	3	20	10600	150	610	4	4	6	840	32	740	33	1200	12	
3	30	3	20	10600	150	540	3	4	5	730	32	650	30	850	12	
4	25	3	20	9000	150	540	3	4	5	730	32	650	30	850	12	
5	25	3	20	9000	150	510	3	4	5	730	32	650	30	850	12	
6	25	3	20	10300	150	460	3	4	5	670	30	590	30	850	12	
7	20	2	20	10300	150	460	3	X	4	670	25	590	30	850	8	
8	20	2	20	8300	150	410	3	X	4	570	25	490	30	850	8	
9	16	2	20	8300	150	460	3	X	4	670	25	590	30	850	8	
10	16	2	20	12500	150	360	3	X	4	520	25	445	30	850	8	
11	12.5	1	12	12500	150	360		3		520	25	445	24	750	6	
12	12.5	1	12	12500	150	310		3		445	25	380	24	750	6	
13	12	1	12	12500	150	360		3		520	25	445	24	750	6	
14	12	1	12	12500	150	310		3		445	25	380	24	750	6	

POLE: MATERIAL-Shaft- High tensile sheet/Plate Equivalent to BSEN 10025:2004/IS 2062:2011 Gr. E350BR/IS 5986:2011 Gr 355, Base Plate- As per IS 2062:2011 Gr E250A, Foundation Bolt- IS 1367:1994; GALVANIZING-As Per IS 4759:1996/IS 2629:1985/BSEN ISO 1461:2009; WIND SPEED-As per IS 875 (Part-3):2015 /As per customer requirement DESIGN-As Per IS 875 Part-3:2015, IS 800:2007, IS 6533:1989, BS 5649:1985/EN 40, ILE TR-7:2000; WELDING -As per IS 10178 : 1995/ IS 9595 : 1996 Design safety factor: As per ILE TR 7:2000; TOLERANCES-As per BS 5649 : 1978/EN 40, IS 1852: 1985

MAST: MATERIAL-Shaft- High tensile sheet/Plate Equivalent to BSEN 10025 : 2004 / IS 2062 : 2011 Gr.E350BR / IS 5986 : 2011 Gr 355, Base Plate- As per IS 2062 : 2011 Gr.E250A, Foundation Bolt- IS 1367 : 1994 / IS 2062 : 2011 Gr.E250A GALVANIZINGAs Per IS 4759 : 1996 / IS 2629 : 1985 / BSEN ISO 1461 : 2009 WIND SPEEDAs per IS 875 (Part-3):2015/As per customer requirementDESIGNAs Per IS 875 Part-3:2015, IS 800 : 2007 / IS 6533:1989 (P-2) / BS 5649 : 1985 / EN 40, ILE TR-7:2000.WELDINGAs per IS 10178 : 1995/ IS 9595 : 1996 DESIGN SAFETY FACTOR As per ILE TR 7:2000. Motor: As per IS 325:1996 (3PH A.C., 415V, 4/6 Pole, 1HP to 3HP) Winch: 350KGS, 500 KGS, 750 KGS (SGDD/DGDD) & 1500 KGS (DGDD). Wire Rope: Stainless Steel 6MM, 8MM, AISI 316, 7/19 Construction. Trilling Cable: As per IS 9968/P-1:1988 [2.5sq 5/8core, 4sq 5/8core, EPR Insulated, PCP Sheathed. Wiring Cable: As per IS 694:1990. Pulley: LM 6 with Self- lubricating PB bush. Hardware: Stainless Steel Feeder Pillar Box: As per customer requirement Tolerances: As per BS 5649 : 1978/EN 40, IS 1852: 1985



Get in touch with us:

Address: 110/6/1, Sanwer Road, Opposite Annapurna Gas Agency, Indore (M.P.)

Contact: +91 8109306323; +91 8871337557

e-mail: laxitindustries.com

1. Streetlight Poles (Octagonal & Conical)

Modern Octagonal poles are sleek in design, elegant & asthetic. They provide a low maintenance, long life solution for street lighting application.



Streetlight Poles



Solar Light Poles



Solar/Advertising Poles



Camera Mounting Poles

2. Highmast Lighting Poles

Highmast Poles are a perfect choice for the places that remain active 24 hours a day, 7 days a week.



Umbrella Mast



Umbrella Mast



Sportsight Mast



Flag Mast



Signage Mast

3. Decorative Garden Lighting Poles

These poles are always the right choice to fulfill your creative aspects.



4. Arms and Brackets

Arms and brackets are the essential part of the entire lighting pole family for which we provide a variety of choices.



LI-AnB-1



LI-AnB-2



LI-AnB-3



LI-AnB - 4



LI-AnB - 5



LI-AnB - 6



LI-AnB - 7



LI-AnB - 8

